

**Sustainability and Equity:
A Better Future for All**



Explanatory note on 2011 HDR composite indices

Zimbabwe

HDI values and rank changes in the 2011 Human Development Report

Introduction

The 2011 Human Development Report presents 2011 Human Development Index (HDI) values and ranks for 187 countries and UN-recognized territories, along with the Inequality-adjusted HDI for 134 countries, the Gender Inequality Index for 146 countries, and the Multidimensional Poverty Index for 109 countries. Country rankings and values in the annual Human Development Index (HDI) are kept under strict embargo until the global launch and worldwide electronic release of the Human Development Report. The 2011 Report will be launched globally in November 2011.

It is misleading to compare values and rankings with those of previously published reports, because the underlying data and methods have changed, as well as the number of countries included in the HDI. The 187 countries ranked in the 2011 HDI represents a significant increase from the 169 countries included in the 2010 Index, when key indicators for many countries were unavailable.

Readers are advised in the Report to assess progress in HDI values by referring to Table 2 ('Human Development Index Trends') in the Statistical Annex of the report. Table 2 is based on consistent indicators, methodology and time-series data and thus shows real changes in values and ranks over time reflecting the actual progress countries have made.

For further details on how each index is calculated please refer to Technical Notes 1-4 in the 2011 Report and the associated background papers available on the Human Development Report website.

Human Development Index (HDI)

The HDI is a summary measure for assessing long-term progress in three basic dimensions of human development: a long and healthy life, access to knowledge and a decent standard of living. As in the 2010 HDR a long and healthy life is measured by life expectancy, access to knowledge is measured by: i) mean years of adult education, which is the average number of years of education received in a life-time by people aged 25 years and older; and ii) expected years of schooling for children of school-entrance age, which is the total number of years of schooling a child of school-entrance age can expect to receive if prevailing patterns of age-specific enrolment rates stay the same throughout the child's life. Standard of living is measured by Gross National Income (GNI) per capita expressed in constant 2005 PPP\$.

To ensure as much cross-country comparability as possible, the HDI is based primarily on international data from the UN Population Division, the UNESCO Institute for Statistics (UIS) and the World Bank. As stated in the introduction, the HDI values and ranks in this year's report are not comparable to those in past reports (including the 2010 HDR) because of a number of revisions done to the component indicators by the mandated agencies. To allow for assessment of progress in HDIs, the 2011 report includes recalculated HDIs from 1980 to 2011.

Zimbabwe's HDI value and rank

Zimbabwe's HDI value for 2011 is 0.376—in the low human development category—positioning the country at 173 out of 187 countries and territories. Between 1980 and 2011, Zimbabwe's HDI value increased from 0.366 to 0.376, an increase of 3.0 per cent or average annual increase of about 0.1 per cent.

The rank of Zimbabwe's HDI for 2010 based on data available in 2011 and methods used in 2011 is 173 out of 187 countries. In the 2010 HDR, Zimbabwe was ranked 169 out of 169 countries. However, it is misleading to compare values and rankings with those of previously published reports, because the underlying data and methods have changed, as well as the number of countries included in the HDI.

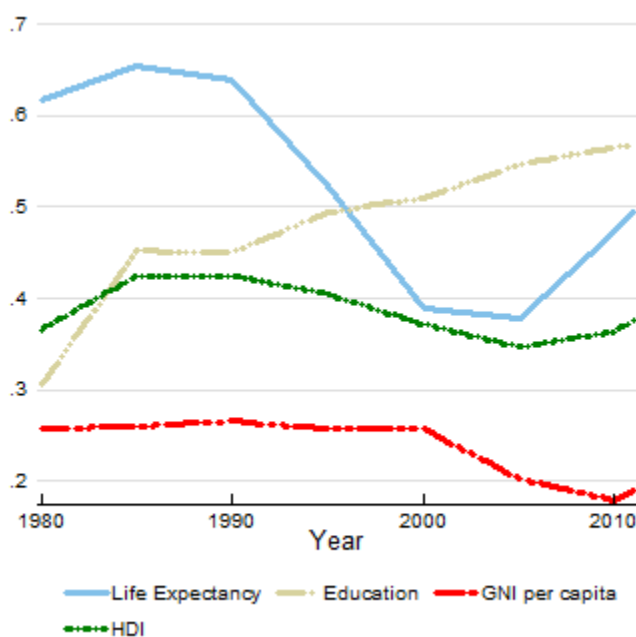
Table A reviews Zimbabwe's progress in each of the HDI indicators. Between 1980 and 2011, Zimbabwe's life expectancy at birth decreased by 7.8 years, mean years of schooling increased by 4.0 years and expected years of schooling increased by 3.4 years. Zimbabwe's GNI per capita decreased by about 38.0 per cent between 1980 and 2011.

Table A: Zimbabwe's HDI trends based on consistent time series data, new component indicators and new methodology

	Life expectancy at birth	Expected years of schooling	Means years of schooling	GNI per capita (2005 PPP\$)	HDI value
1980	59.2	6.5	3.2	606	0.366
1985	61.5	11.5	4.0	615	0.425
1990	60.6	10.1	4.5	642	0.425
1995	53.1	9.9	5.5	601	0.405
2000	44.7	9.9	5.9	608	0.372
2005	44.0	9.9	6.7	412	0.347
2010	50.0	9.9	7.2	351	0.364
2011	51.4	9.9	7.2	376	0.376

Figure 1 below shows the contribution of each component index to Zimbabwe's HDI since 1980.

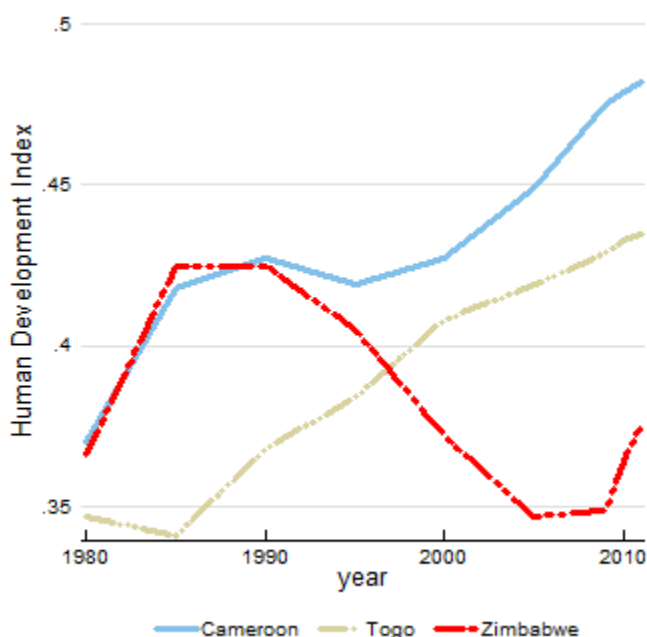
Figure 1: Trends in Zimbabwe's HDI component indices 1980-2011



Assessing progress relative to other countries

Long-term progress can be usefully assessed relative to other countries—both in terms of geographical location and HDI value. For instance, during the period between 1980 and 2011 Zimbabwe, Cameroon and Togo experienced different degrees of progress toward increasing their HDIs (See Figure 2).

Figure 2: Trends in Zimbabwe's HDI 1980-2011



Zimbabwe's 2011 HDI of 0.376 is below the average of 0.456 for countries in the low human development group and below the average of 0.463 for countries in Sub-Saharan Africa. From Sub-Saharan Africa, countries which are close to Zimbabwe in 2011 HDI rank and population size are Niger and Kenya which have HDIs ranked 186 and 143 respectively (see Table B).

Table B: Zimbabwe's HDI indicators for 2011 relative to selected countries and groups

	HDI value	HDI rank	Life expectancy at birth	Expected years of schooling	Mean years of schooling	GNI per capita (PPP US\$)
Zimbabwe	0.376	173	51.4	9.9	7.2	376
Niger	0.295	186	54.7	4.9	1.4	641
Kenya	0.509	143	57.1	11.0	7.0	1,492
Sub-Saharan Africa	0.463	—	54.4	9.2	4.5	1,966
Low HDI	0.456	—	58.7	8.3	4.2	1,585

Inequality-adjusted HDI (IHDI)

The HDI is an average measure of basic human development achievements in a country. Like all averages, the HDI masks inequality in the distribution of human development across the population at the country level. The 2010 HDR introduced the 'inequality adjusted HDI (IHDI)', which takes into account inequality in all three dimensions of the HDI by 'discounting' each dimension's average value according to its level of inequality. The HDI can be viewed as an index of 'potential' human development and IHDI as an index of actual human development. The 'loss' in potential human development due to inequality is given by the difference between the HDI and the IHDI, and can be expressed as a percentage. (For more details see the technical note 2).

Zimbabwe's HDI for 2011 is 0.376. However, when the value is discounted for inequality, the HDI falls to 0.268, a loss of 28.7 per cent due to inequality in the distribution of the dimension indices. Niger and Kenya show losses due to inequality of 34.2 per cent and 33.6 per cent respectively. The average loss due to inequality for low HDI countries is 33.3 per cent and for Sub-Saharan Africa it is 34.5 per cent.

Table C: Zimbabwe's IHD for 2011 relative to selected countries and groups

	IHD value	Overall Loss (%)	Loss due to inequality in life expectancy at birth (%)	Loss due to inequality in education (%)	Loss due to inequality in income (%)
Zimbabwe	0.268	28.7	30.6	20.1	34.5
Niger	0.195	34.2	42.6	39.5	17.9
Kenya	0.338	33.6	34.1	30.7	36.0
Sub-Saharan Africa	0.303	34.5	39.0	35.6	28.4
Low HDI	0.304	33.3	35.6	39.2	24.2

Gender Inequality Index (GII)

The Gender Inequality Index (GII) reflects gender-based inequalities in three dimensions – reproductive health, empowerment, and economic activity. Reproductive health is measured by maternal mortality and adolescent fertility rates; empowerment is measured by the share of parliamentary seats held by each gender and attainment at secondary and higher education by each gender; and economic activity is measured by the labour market participation rate for each gender. The GII replaced the previous Gender-related Development Index and Gender Empowerment Index. The GII shows the loss in human development due to inequality between female and male achievements in the three GII dimensions. (For more details on GII please see Technical note 3 in the Statistics Annex.)

Zimbabwe has a GII value of 0.583, ranking it 118 out of 146 countries in the 2011 index. In Zimbabwe, 17.9 per cent of parliamentary seats are held by women, and 48.8 per cent of adult women have reached a secondary or higher level of education compared to 62.0 per cent of their male counterparts. For every 100,000 live births, 790 women die from pregnancy related causes; and the adolescent fertility rate is 64.6 births per 1000 live births. Female participation in the labour market is 60.0 per cent compared to 74.3 for men.

In comparison Niger and Kenya are ranked at 144 and 130 respectively on this index.

Table D: Zimbabwe's GII for 2011 relative to selected countries and groups

	GII value	GII Rank	Maternal mortality ratio	Adolescent fertility rate	Female seats in parliament (%)	Population with at least secondary education (%)		Labour force participation rate (%)	
						Female	Male	Female	Male
Zimbabwe	0.583	118	790	64.6	17.9	48.8	62.0	60.0	74.3
Niger	0.724	144	820	207.1	13.1	2.5	7.6	38.9	87.5
Kenya	0.627	130	530	100.2	9.8	20.1	38.6	76.4	88.1
Sub-Saharan Africa	0.610	—	619	119.7	19.8	22.2	34.9	62.9	81.2
Low HDI	0.606	—	532	98.2	18.2	18.7	32.4	54.6	82.7

Multidimensional Poverty Index (MPI)

The 2010 HDR introduced the Multidimensional Poverty Index (MPI), which identifies multiple deprivations in the same households in education, health and standard of living. The education and health dimensions are based on two indicators each while the standard of living dimension is based on six indicators. All of the indicators needed to construct the MPI for a household are taken from the same

household survey. The indicators are weighted, and the deprivation scores are computed for each household in the survey. A cut-off of 33.3 percent, which is the equivalent of one-third of the weighted indicators, is used to distinguish between the poor and nonpoor. If the household deprivation score is 33.3 percent or greater, that household (and everyone in it) is multidimensionally poor. Households with a deprivation score greater than or equal to 20 percent but less than 33.3 percent are *vulnerable* to or at risk of becoming multidimensionally poor.

The most recent survey data that were publically available for Zimbabwe's MPI estimation refer to 2006. In Zimbabwe 39.7 per cent of the population suffer multiple deprivations while an additional 24.0 per cent are vulnerable to multiple deprivations. The breadth of deprivation (intensity) in Zimbabwe, which is the average percentage of deprivation experienced by people in multidimensional poverty, is 45.3 per cent. The MPI, which is the share of the population that is multi-dimensionally poor, adjusted by the intensity of the deprivations, is 0.180. Niger and Kenya have MPIs of 0.642 and 0.229 respectively.

Table E shows the percentage of Zimbabwe's population that live in severe poverty (deprivation score is 50 per cent or more) and that are vulnerable to poverty (deprivation score between 20 and 30 per cent). Figures for Niger and Kenya are also shown in the table for comparison.

Table E: Zimbabwe's MPI for 2011 relative to selected countries

	MPI value	Head count (%)	Intensity of deprivation (%)	Population vulnerable to poverty (%)	Population in severe poverty (%)	Population below income poverty line (%)
Zimbabwe	0.180	39.7	45.3	24.0	14.8	..
Niger	0.642	92.4	69.4	4.0	81.8	43.1
Kenya	0.229	47.8	48.0	27.4	19.8	19.7